

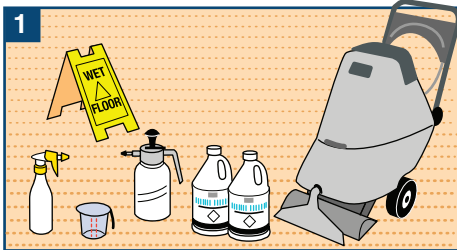
Extraction Cleaning



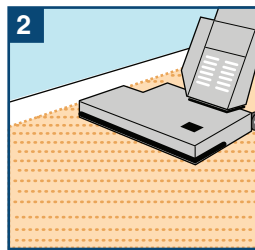
Provided by:



Great Western Supply Co.



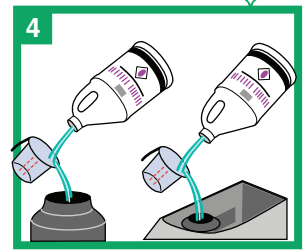
1 Gather equipment.



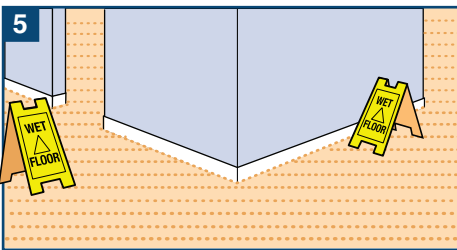
2 Vacuum area thoroughly.



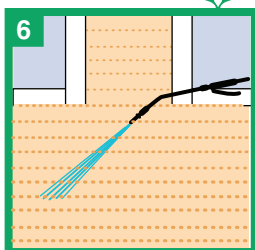
3 Wear proper personal protective equipment.



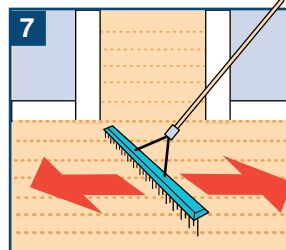
4 Properly mix prespray and extraction cleaner in appropriate container or machine.



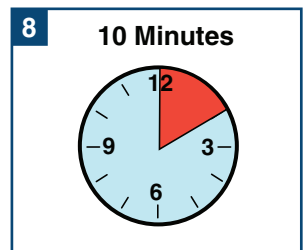
5 Place wet floor signs at all entranceways.



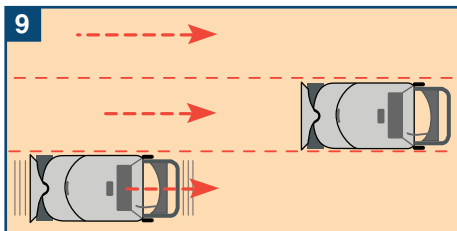
6 Spray carpet with a prespray solution using a pressure sprayer.



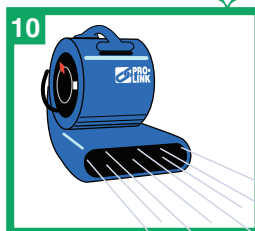
7 Use a carpet rake in heavily soiled areas.



8 Allow 10 minutes dwell time before extracting.



9 Use the double pass method with the extractor and overlap passes. Use a rinse if necessary.



10 Allow appropriate dry time before traffic.

 = Green Cleaning Process

Green Cleaning Tips

- Notify occupants when carpets are to be extracted as this activity can affect more sensitive individuals.
- When prespraying, solution should be applied from a sprayer in a stream or a course spray, as compared to a fine mist.
- Minimize the amount of cleaning chemical used by properly diluting the product.
- Use the least amount of water possible.
- Equipment should be fully functional to minimize moisture and potential for mold and mildew.
- Increase ventilation where possible. Carpets should be completely dry within 24 hours.

Great Western Supply Company

116 East 53rd Street
Davenport, IA 52806

563-445-6644

Fax: 563-445-6654

www.greatwesternsupply.com